

01

Height Safety
Lifting
Load Control
Safety Management

PHS TRAINING 5

SARA
(Search and Rope Access)
Operative

DURATION

5 Days

RATIO OF TRAINERS TO TRAINEES

1 Trainer to 6 Trainees

PRE-COURSE INSTRUCTIONS AND ENTRY REQUIREMENTS

SpanSet recommend that all trainees for this course undergo an assessment to identify their suitability. SpanSet are able to either arrange this or advise those wishing to do so.

- All delegates to be registered on the course registration form.
- All delegates to be advised of the following:
 - Fire procedures
 - Toilets and Welfare

OVERVIEW

The course is designed to provide:

- A background into how Rope Access can be utilised for search purposes.
- An outline of the legislation relating to general work at heights and how rope access fits into this.
- The ability for officers to access areas using rope techniques including:
 - Descending
 - Ascending
 - Climbing
- Officers will be able to inspect, care and maintain all the associated equipment required for the techniques.

COURSE SUMMARY

- Officers to carry out a multiple choice test of the key points of safe work at height
- Officers to carry out a practical assessment of all the techniques covered
- Areas of concern to be addressed by both the trainer and the officers
- Summarise the key points of the course
- Issue course feedback forms
- Thank the officers for attending

SARA (Search and Rope Access) Operative

COURSE JOINING INSTRUCTIONS

COURSE ASSEMBLY

Unless otherwise stated, all courses are held at SpanSet (UK) Limited and will assemble at 0900 hrs daily. Delegates should report to the main training reception upon arrival.

EQUIPMENT & CLOTHING

All equipment required throughout the course will be provided by SpanSet Ltd.

Candidates should provide their own comfortable clothing and safety footwear, with provision made for inclement weather conditions, i.e. fleeces, waterproofs, windproof, etc.

FOOD & REFRESHMENT

Refreshments will be provided throughout the day on all courses.

A lunch will be provided on all courses of a day or more in duration held at SpanSet.

ACCOMMODATION

Details of local accommodation on request.



COURSE SYLLABUS

Theory/Practical

- Introduction to Rope Access
- Introduction to SARA
- Health & Safety Legislation
- Equipment Familiarisation
- Equipment Strengths, Limitations and Standards
- Equipment Fitting & Safety Checks
- Principles of Safe Rigging
- Principles of Rescue
- Safe Access on and off the ropes
- Descending Ropes
- Ascending Ropes
- Rope to Rope Transfers
- Passing Deviations
- Climbing
- Rescuing a casualty in descent mode
- Rescuing a casualty in ascent mode
- Hauling & Lowering Systems
- Basic Rigging

SARA EQUIPMENT PROCEDURES

To include a full working knowledge of:

- Equipment Storage
- Equipment Maintenance
- Equipment Inspection
- Equipment Issue

SARA OPERATIONAL PROCEDURES

To include a full working knowledge of:

- Operational Risk Assessment
- Operational Safety Method Statement
- Operational Despatch Procedure

ASSESSMENT METHODS

Details of written assessments

All candidates will carry out a multiple-choice test covering the key points of the course. If a candidate gets a total score of less than 80% then the trainer will explore the candidates' knowledge of the topic. Where the candidate has a good understanding of the topic the result may be amended.

Details of other assessment methods

During the course of the day the candidates will be continually verbally assessed by the trainer using working examples and scenarios to determine the candidates understanding of a specific topic.

EQUIPMENT COVERED DURING TRAINING

Rope access equipment including:

- Harnesses
- Helmets
- Descenders
- Ascenders
- Ropes and Rigging Equipment

Samples of other associated equipment including:

- Fall Arrest Harnesses and Lanyards
- Alternative Work Positioning Equipment
- Items of Defective Equipment for Inspection

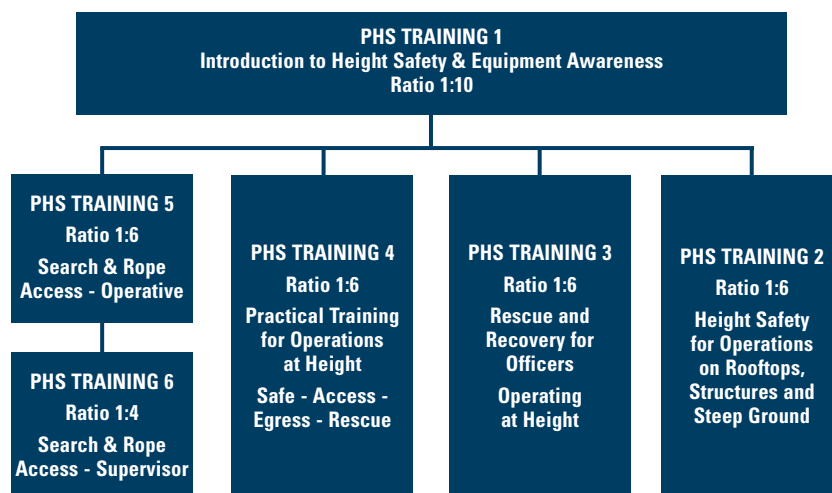
FEEDBACK TO CLIENT AFTER COURSE

- Certificate for all officers valid for three years
- Photo ID cards for all officers, valid for three years
- Written appraisal of trainee can be provided if required

RECORDS TO BE MAINTAINED BY SPANSET

- Course registration sheet
- Copy photo for duplicate issue
- Course feedback forms where completed

Design • Manufacture • Supply • Training



SpanSet Limited

Telford Way, Middlewich,
Cheshire, CW10 0HX, UK
Tel +44 (0) 1606 738529
Fax +44 (0) 1606 841666
info@spanset.co.uk
www.spanset.co.uk

SpanSet also provide training for: • Height Safety Courses for Police & Security Forces • Height Safety for Rescue Courses for the Emergency Services • Vehicle Fall Protection Courses • Safe Lifting & Rigging Courses • Load Restraint Courses