

01

Height Safety
Lifting
Load Control
Safety Management

PHS TRAINING 2

Height Safety for
Operations on Rooftops,
Structures Steep Ground

DURATION

½ Day

RATIO OF TRAINERS TO TRAINEES

1 Trainer to 6 Trainees

PRE-COURSE INSTRUCTIONS AND ENTRY REQUIREMENTS

- All officers to be registered on the course registration form
- All officers to be advised of the following:
 - Fire procedure
 - Toilets and welfare

This course is designed as an enhancement to PHS Training 1 and is only carried out when officers have successfully completed that course.

OVERVIEW

- A practical enhancement to PHS Training 1 to allow officers to work safely in the vicinity of unprotected edges, on steep ground or slightly angled rooftops.

COURSE SUMMARY

- In addition to the test carried out in PHS Training 1, all officers will be monitored by the trainer throughout the practical sessions. Any concerns will be addressed by officer and trainer on a continual basis
- Summarise the topics covered during the course
- Issue course feedback forms
- Thank the officer for attending

COURSE SYLLABUS

Theory/Practical

In addition to the theory elements of the PHS 1 the following topics will be covered:

- What constitutes an unprotected edge
- What constitutes steep ground and when to use work position techniques
- The importance of avoidance of hazards where possible
- Correct risk assessment when setting up working systems and knowing their limitations
- Exposure to height
- Anchor Selection
- Work Restraint Systems
- Work Position Systems
- Fall arrest systems

Height Safety for Operations on Rooftops, Structures Steep Ground

COURSE JOINING INSTRUCTIONS

COURSE ASSEMBLY

Unless otherwise stated, all courses are held at SpanSet (UK) Limited and will assemble at 0900 hrs daily. Delegates should report to the main training reception upon arrival.

EQUIPMENT & CLOTHING

All equipment required throughout the course will be provided by SpanSet Ltd.

Candidates should provide their own comfortable clothing and safety footwear, with provision made for inclement weather conditions, i.e. fleeces, waterproofs, windproof, etc.

FOOD & REFRESHMENT

Refreshments will be provided throughout the day on all courses.

A lunch will be provided on all courses of a day or more in duration held at SpanSet.

ACCOMMODATION

Details of local accommodation on request.

The above work systems must be used and understood by all officers and their correct application explored.

- Correct fitting and adjustment of Fall Arrest and Work Positioning harnesses by all officers.
- The safe use of all styles of fall arrest lanyards
- Ladder ascent and descent using in-situ permanent systems
- Ladder ascent and descent using temporary systems
- Installation of flexible line fall arrest systems
- The use of horizontal trans-fastener systems
- The use of temporary horizontal line systems
- Use and limitations of adjustable work positioning lanyard
- The use of restraint systems and the potential variations
- Importance of rescue provision

All of the practical systems must be demonstrated and their correct applications understood by all delegates in order to complete the course.

ASSESSMENT METHODS

Details of written assessments

All candidates will carry out a multiple-choice test covering the key points of the course. If a candidate gets a total score of less than 80% then the trainer will explore the candidates' knowledge of the topic. Where the candidate has a good understanding of the topic the result may be amended.

Details of other assessment methods

During the course of the day the candidates will be continually verbally assessed by the trainer using working examples and scenarios to determine the candidates understanding of a specific topic.

EQUIPMENT COVERED DURING TRAINING

Samples of

- Fall arrest manuals
- White boards and markers
- Clima harnesses and lanyards
- Inertia blocks
- Rail lock travellers
- Slip lock travellers
- Flexible line fall-arrester
- Fall arrest lanyards
- Horizontal safety line
- Latchway trans-fasteners
- Grillon lanyard
- Standard Safety Line

FEEDBACK TO CLIENT AFTER COURSE

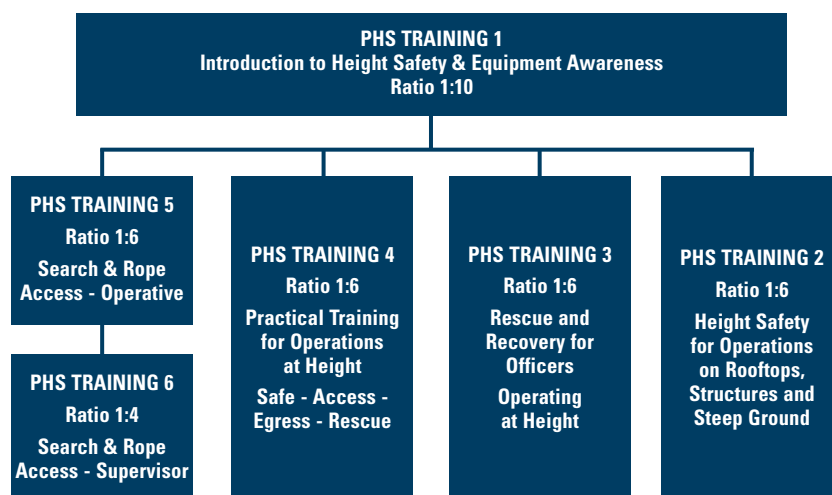
- Certificate for all officers, valid for three years
- Photo ID card for all officers, valid for three years

RECORDS TO BE MAINTAINED BY SPANSET

- Course registration sheet
- Copy photo for duplicate issue
- Course feedback forms where completed



Design • Manufacture • Supply • Training



SpanSet Limited

Telford Way, Middlewich,
Cheshire, CW10 0HX, UK
Tel +44 (0) 1606 738529
Fax +44 (0) 1606 841666
info@spanset.co.uk
www.spanset.co.uk

SpanSet also provide training for: • Height Safety Courses for Police & Security Forces • Height Safety for Rescue Courses for the Emergency Services
• Vehicle Fall Protection Courses • Safe Lifting & Rigging Courses • Load Restraint Courses